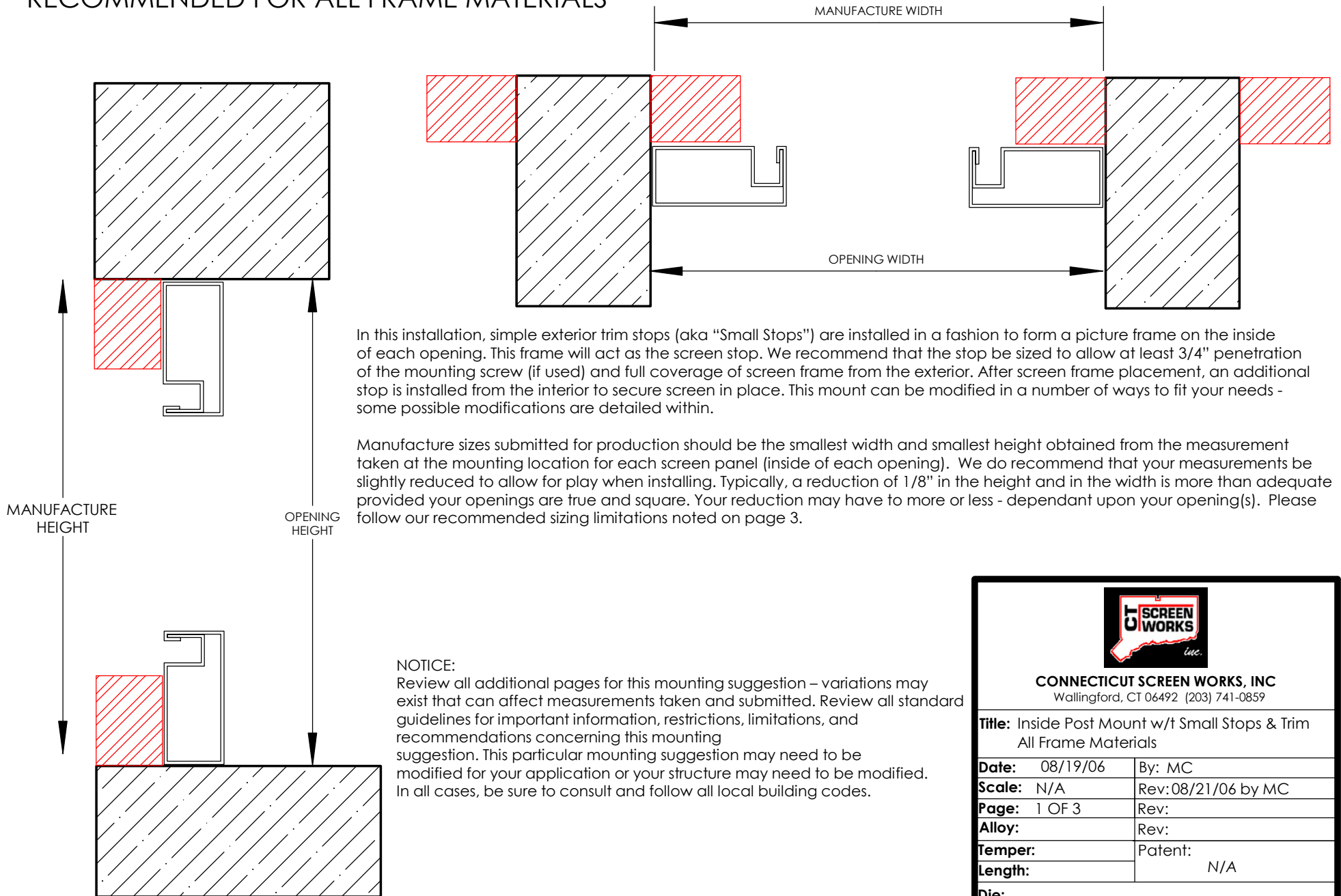



INSIDE POST WITH SMALL STOPS AND TRIM RECOMMENDED FOR ALL FRAME MATERIALS

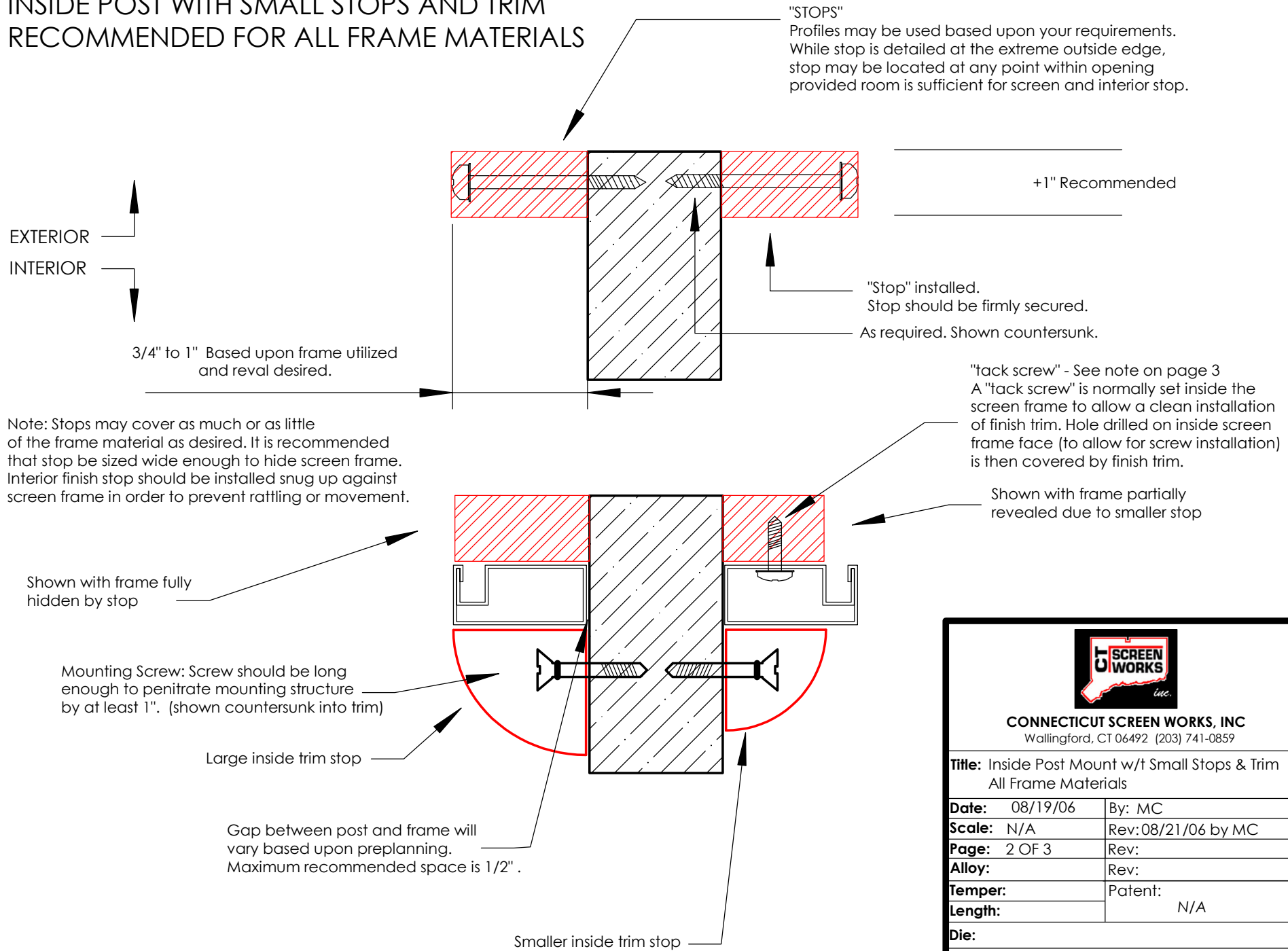





CONNECTICUT SCREEN WORKS, INC
Wallingford, CT 06492 (203) 741-0859

Title: Inside Post Mount w/t Small Stops & Trim All Frame Materials	
Date: 08/19/06	By: MC
Scale: N/A	Rev: 08/21/06 by MC
Page: 1 OF 3	Rev:
Alloy:	Rev:
Temper:	Patent:
Length:	N/A
Die:	
all contents copyright 2006 by CSW, Inc.	

INSIDE POST WITH SMALL STOPS AND TRIM RECOMMENDED FOR ALL FRAME MATERIALS



Note: Stops may cover as much or as little of the frame material as desired. It is recommended that stop be sized wide enough to hide screen frame. Interior finish stop should be installed snug up against screen frame in order to prevent rattling or movement.



CONNECTICUT SCREEN WORKS, INC
Wallingford, CT 06492 (203) 741-0859

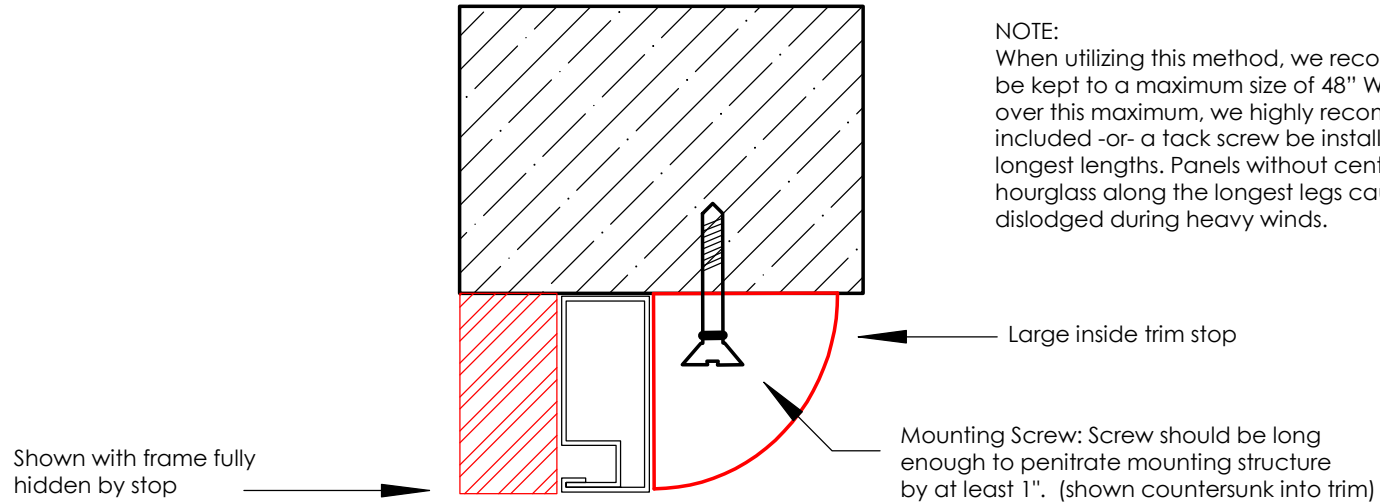
Title: Inside Post Mount w/t Small Stops & Trim All Frame Materials	
Date: 08/19/06	By: MC
Scale: N/A	Rev: 08/21/06 by MC
Page: 2 OF 3	Rev:
Alloy:	Rev:
Temper:	Patent:
Length:	N/A
Die:	

all contents copyright 2006 by CSW, Inc.

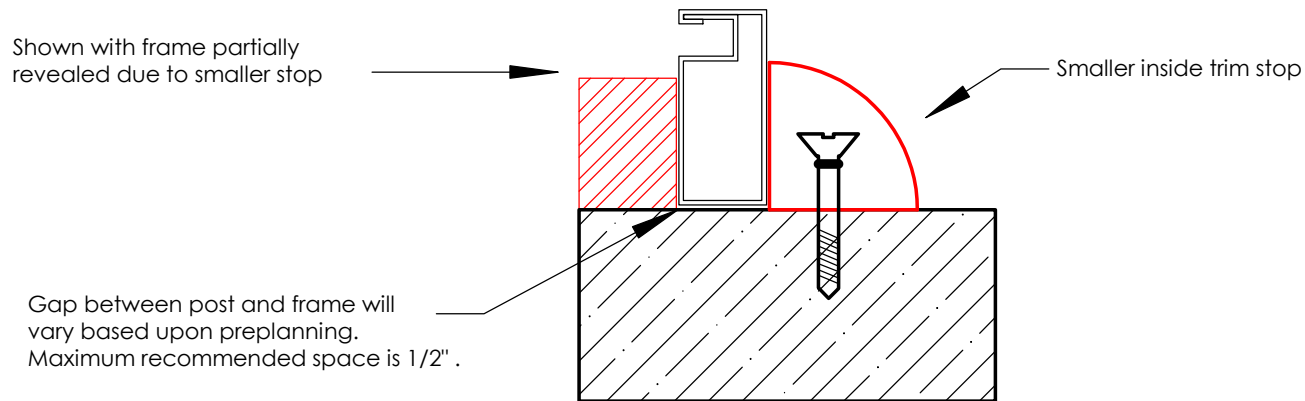
INSIDE POST WITH SMALL STOPS AND TRIM RECOMMENDED FOR ALL FRAME MATERIALS




SIDE VIEW OF TOP AND BASE FRAME INSTALLATION



Note: Stops may cover as much or as little of the frame material as desired. It is recommended that stop be sized wide enough to hide screen frame. Interior finish stop should be installed snug up against screen frame in order to prevent rattling or movement.





CONNECTICUT SCREEN WORKS, INC
Wallingford, CT 06492 (203) 741-0859

Title: Inside Post Mount w/t Small Stops & Trim All Frame Materials	
Date: 08/19/06	By: MC
Scale: N/A	Rev: 08/21/06 by MC
Page: 3 OF 3	Rev:
Alloy:	Rev:
Temper:	Patent:
Length:	N/A
Die:	
all contents copyright 2006 by CSW, Inc.	