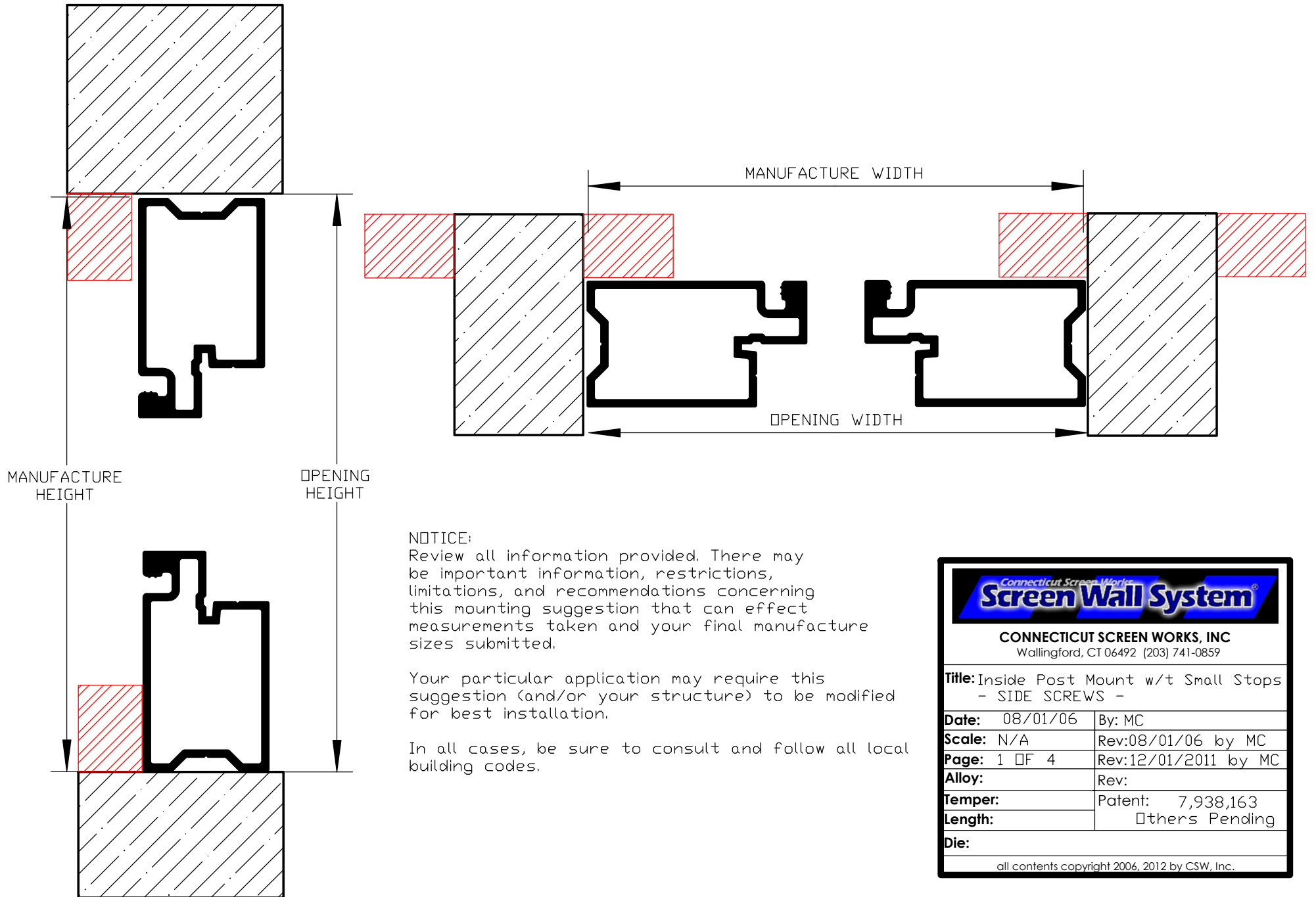
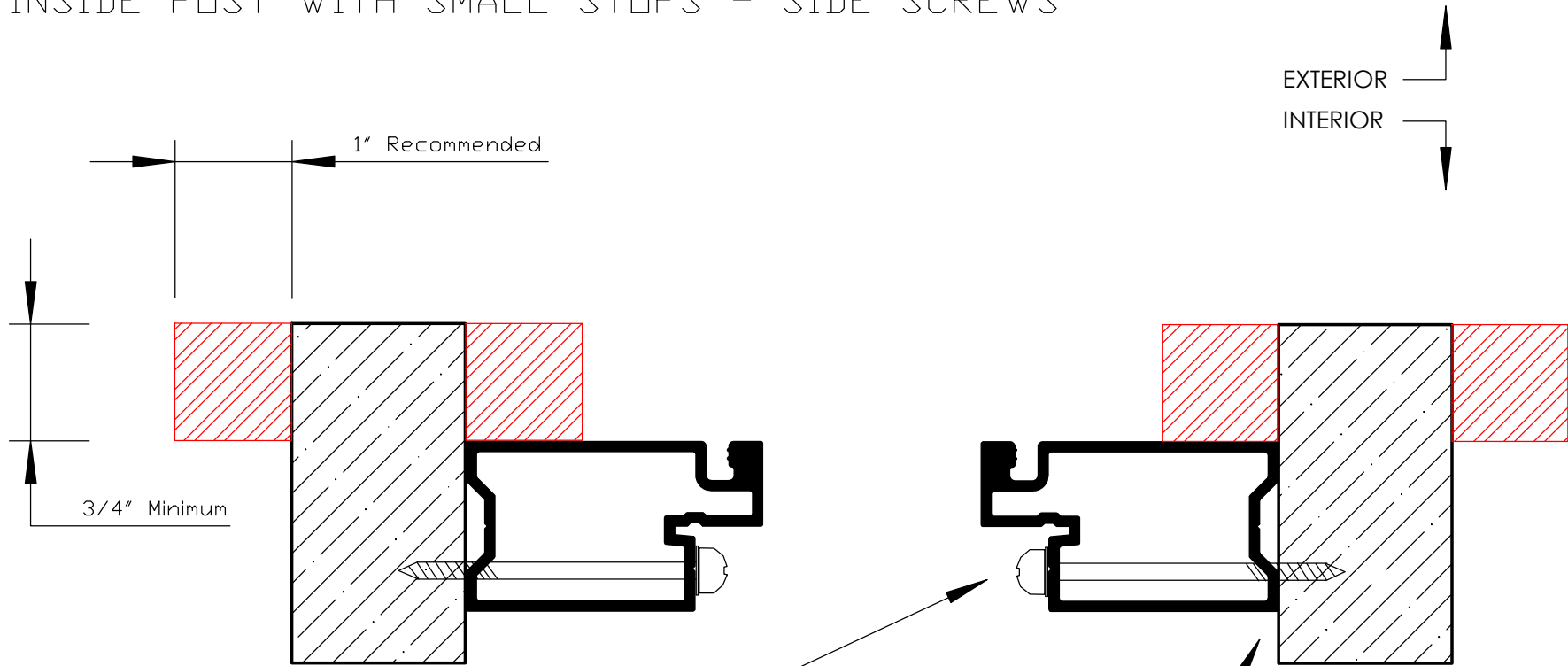


# INSIDE POST WITH SMALL STOPS - SIDE SCREWS



# INSIDE POST WITH SMALL STOPS - SIDE SCREWS




Mounting Screw:

#8 x 2-1/2" for screen only installations.  
 #8 x 3" for systems using inserts.

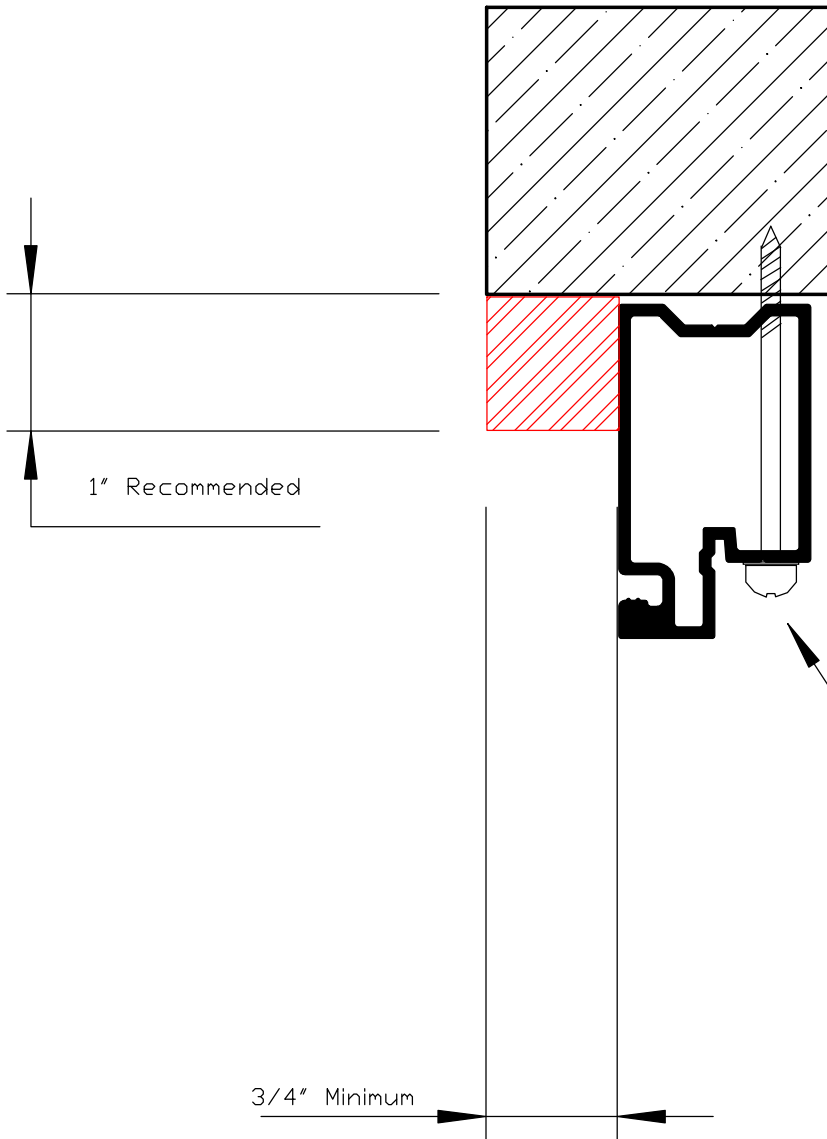
Standard Stainless Steel deck screw with color matched heads (counter-sunk) preferred.

Adjust screw type as needed based upon base material. Heads must be counter-sunk when using inserts.

Gap between post and master frame will vary based upon preplanning. Maximum recommended space is 1/4" or less in all applications.

	
<b>CONNECTICUT SCREEN WORKS, INC</b> Wallingford, CT 06492 (203) 741-0859	
<b>Title:</b> Inside Post Mount w/t Small Stops - SIDE SCREWS -	
<b>Date:</b> 08/01/06	<b>By:</b> MC
<b>Scale:</b> N/A	<b>Rev:</b> 08/01/06 by MC
<b>Page:</b> 2 OF 4	<b>Rev:</b> 12/01/2011 by MC
<b>Alloy:</b>	<b>Rev:</b>
<b>Temper:</b>	<b>Patent:</b> 7,938,163
<b>Length:</b>	Others Pending
<b>Die:</b>	
all contents copyright 2006, 2012 by CSW, Inc.	

# INSIDE POST WITH SMALL STOPS - SIDE SCREWS




Gap between post and master frame will vary based upon preplanning. Maximum recommended space is 1/4" or less in all applications.

Mounting Screw:

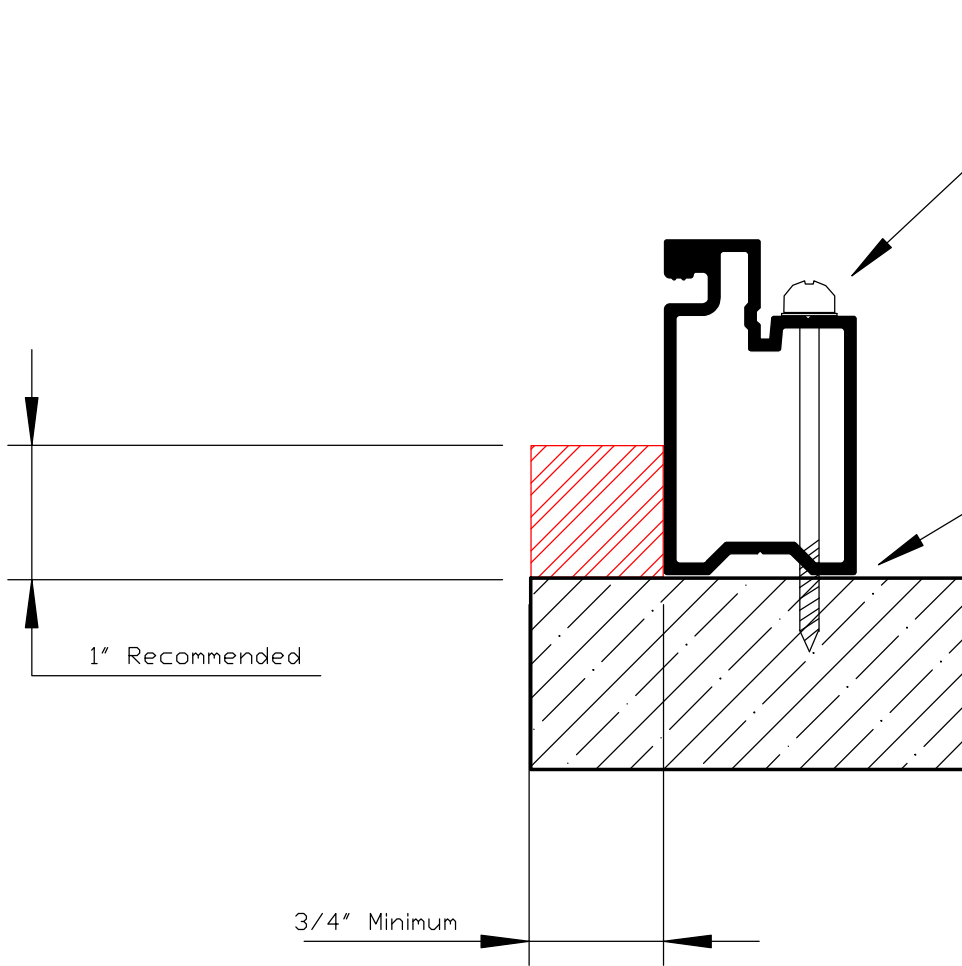
#8 x 2-1/2" for screen only installations.  
#8 x 3" for systems using inserts.

Standard Stainless Steel deck screw with color matched heads (counter-sunk) preferred.

Adjust screw type as needed based upon base material. Heads must be counter-sunk when using inserts.

	
<b>CONNECTICUT SCREEN WORKS, INC</b> Wallingford, CT 06492 (203) 741-0859	
<b>Title:</b> Inside Post Mount w/t Small Stops - SIDE SCREWS -	
<b>Date:</b> 08/01/06	<b>By:</b> MC
<b>Scale:</b> N/A	<b>Rev:</b> 08/01/06 by MC
<b>Page:</b> 3 OF 4	<b>Rev:</b> 12/01/2011 by MC
<b>Alloy:</b>	<b>Rev:</b>
<b>Temper:</b>	Patent: 7,938,163
<b>Length:</b>	Others Pending
<b>Die:</b>	
all contents copyright 2006, 2012 by CSW, Inc.	

# INSIDE POST WITH SMALL STOPS - SIDE SCREWS




Mounting Screw:  
 #8 x 2-1/2" for screen only installations.  
 #8 x 3" for systems using inserts.

Standard Stainless Steel deck screw with color matched heads (counter-sunk) preferred.

Adjust screw type as needed based upon base material. Heads must be counter-sunk when using inserts.

Gap between post and master frame will vary based upon preplanning. Maximum recommended space is 1/8" or less in all applications.

	
<b>CONNECTICUT SCREEN WORKS, INC</b> Wallingford, CT 06492 (203) 741-0859	
<b>Title:</b> Inside Post Mount w/t Small Stops - SIDE SCREWS -	
<b>Date:</b> 08/01/06	<b>By:</b> MC
<b>Scale:</b> N/A	<b>Rev:</b> 08/01/06 by MC
<b>Page:</b> 4 of 4	<b>Rev:</b> 12/01/2011 by MC
<b>Alloy:</b>	<b>Rev:</b>
<b>Temper:</b>	Patent: 7,938,163
<b>Length:</b>	Others Pending
<b>Die:</b>	
all contents copyright 2006, 2012 by CSW, Inc.	