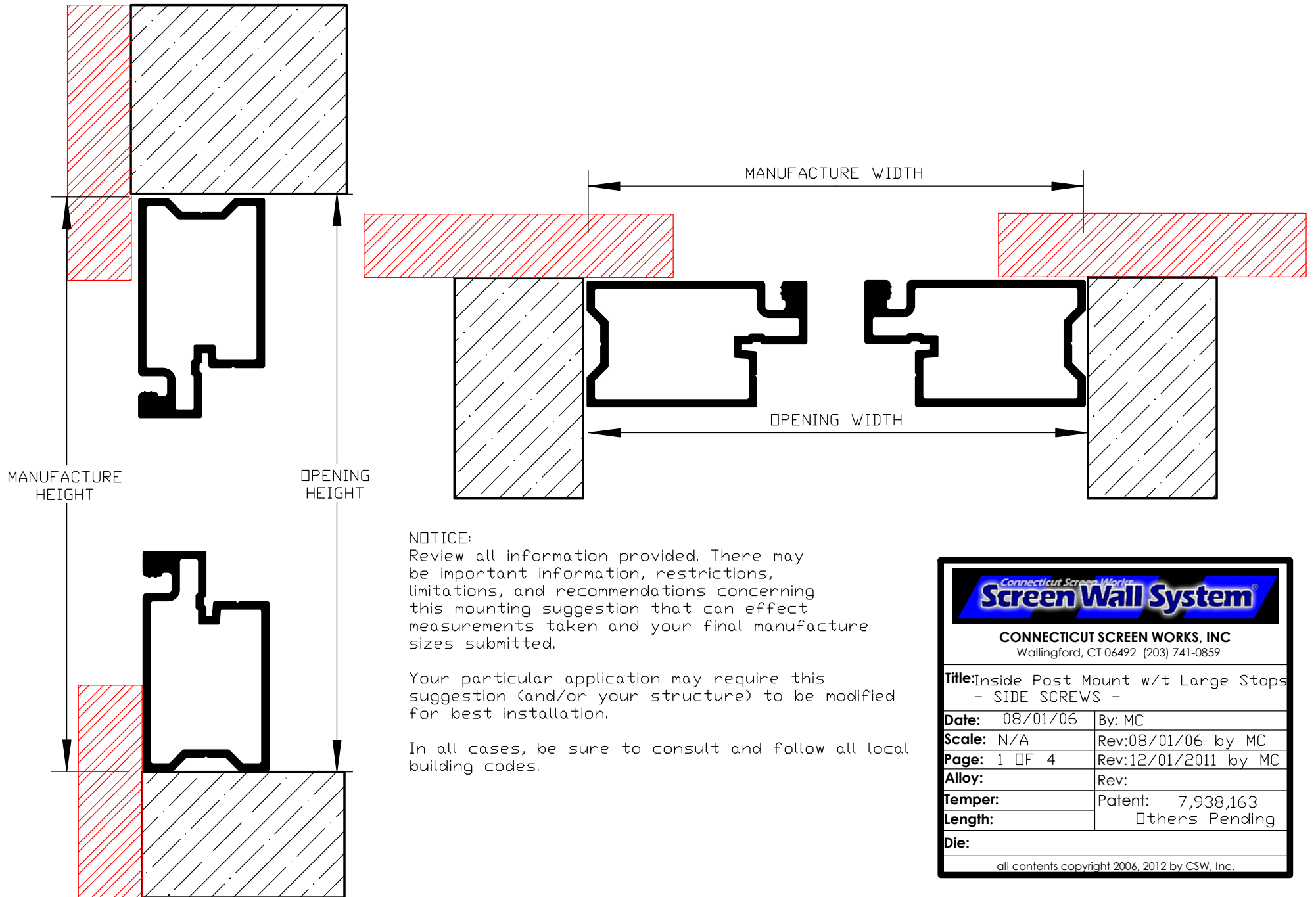

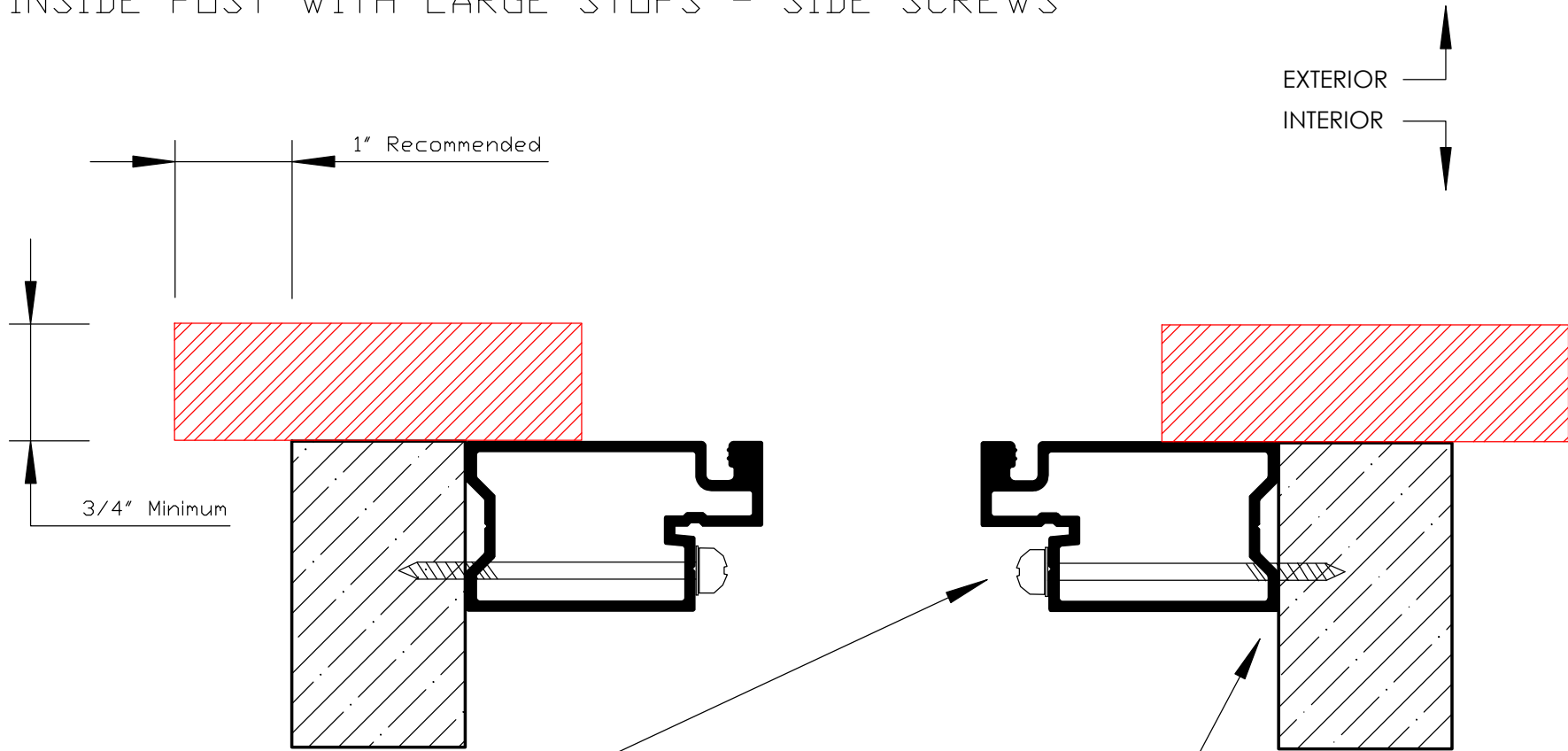


INSIDE POST WITH LARGE STOPS - SIDE SCREWS



	
CONNECTICUT SCREEN WORKS, INC Wallingford, CT 06492 (203) 741-0859	
Title: Inside Post Mount w/t Large Stops - SIDE SCREWS -	
Date: 08/01/06	By: MC
Scale: N/A	Rev: 08/01/06 by MC
Page: 1 OF 4	Rev: 12/01/2011 by MC
Alloy:	Rev:
Temper:	Patent: 7,938,163
Length:	Others Pending
Die:	
all contents copyright 2006, 2012 by CSW, Inc.	

INSIDE POST WITH LARGE STOPS - SIDE SCREWS




Mounting Screw:

#8 x 2-1/2" for screen only installations.
 #8 x 3" for systems using inserts.

Standard Stainless Steel deck screw with color matched heads (counter-sunk) preferred.

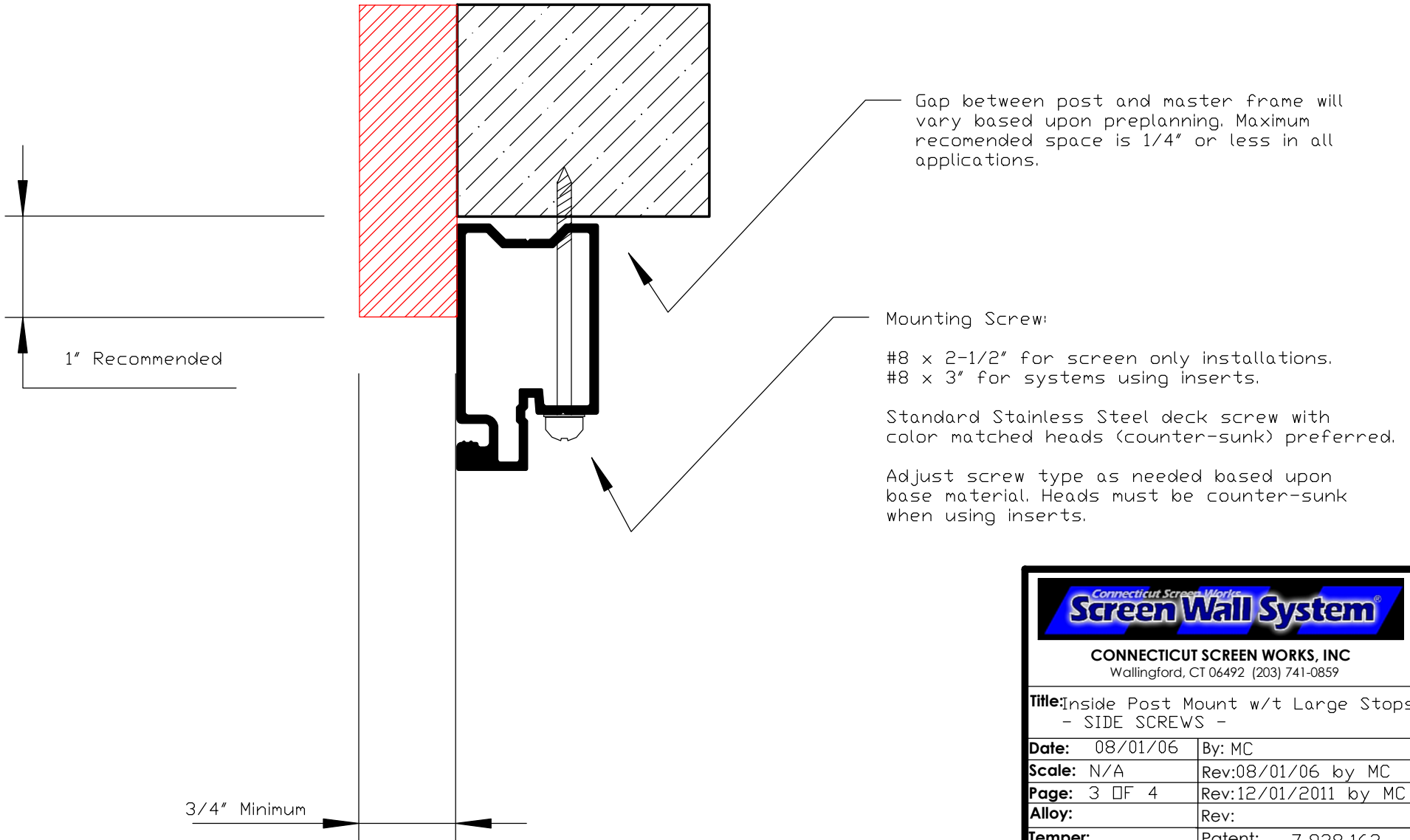
Adjust screw type as needed based upon base material. Heads must be counter-sunk when using inserts.


Gap between post and master frame will vary based upon preplanning. Maximum recommended space is 1/4" or less in all applications.

	
CONNECTICUT SCREEN WORKS, INC Wallingford, CT 06492 (203) 741-0859	
Title: Inside Post Mount w/t Large Stops - SIDE SCREWS -	
Date: 08/01/06	By: MC
Scale: N/A	Rev: 08/01/06 by MC
Page: 2 OF 4	Rev: 12/01/2011 by MC
Alloy:	Rev:
Temper:	Patent: 7,938,163
Length:	Others Pending
Die:	
all contents copyright 2006, 2012 by CSW, Inc.	

INSIDE POST WITH LARGE STOPS - SIDE SCREWS

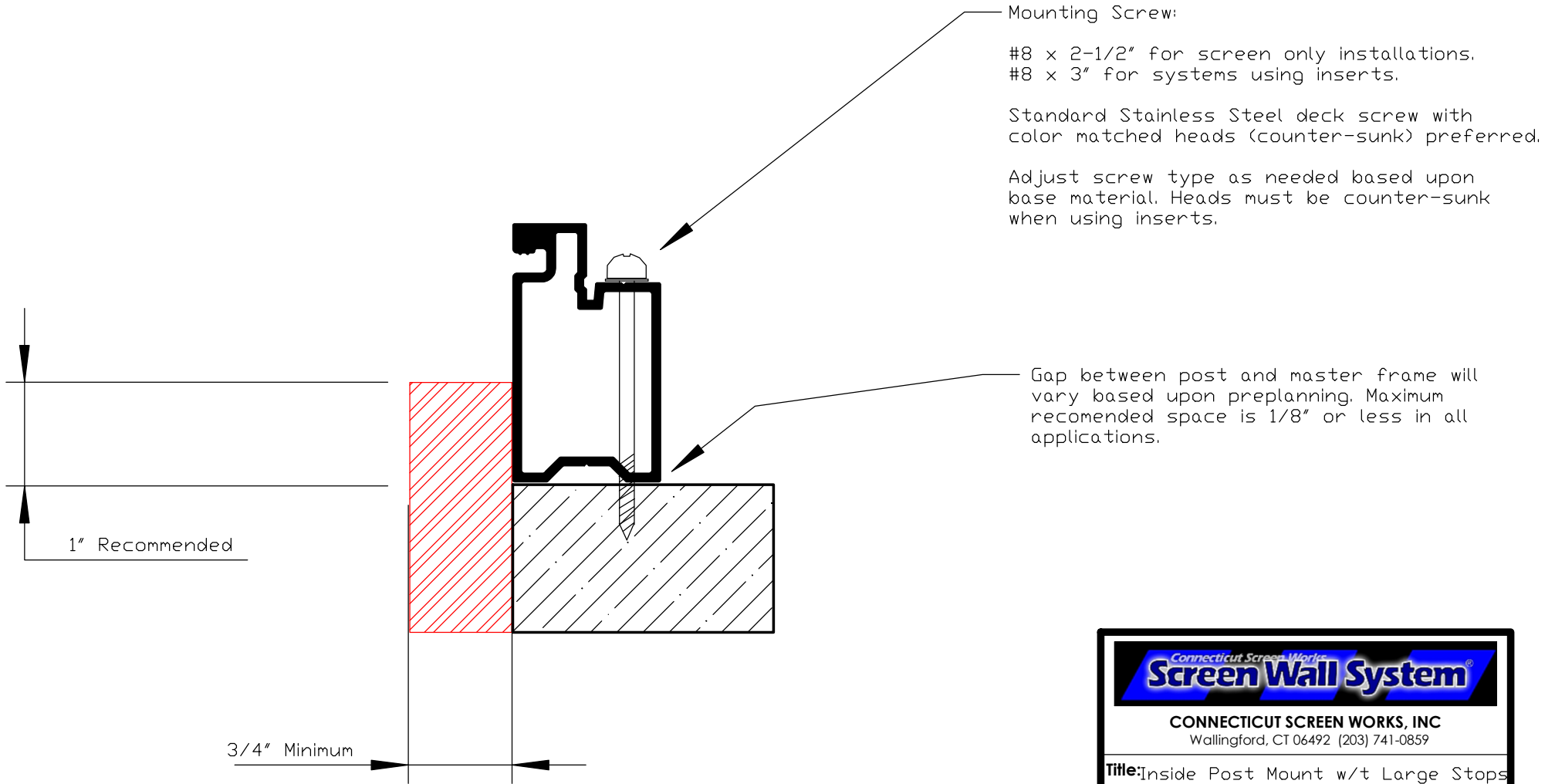
← EXTERIOR
INTERIOR →




	
CONNECTICUT SCREEN WORKS, INC Wallingford, CT 06492 (203) 741-0859	
Title: Inside Post Mount w/t Large Stops - SIDE SCREWS -	
Date: 08/01/06	By: MC
Scale: N/A	Rev: 08/01/06 by MC
Page: 3 OF 4	Rev: 12/01/2011 by MC
Alloy:	Rev:
Temper:	Patent: 7,938,163
Length:	Others Pending
Die:	
all contents copyright 2006, 2012 by CSW, Inc.	

INSIDE POST WITH LARGE STOPS - SIDE SCREWS

← EXTERIOR
INTERIOR →



	
CONNECTICUT SCREEN WORKS, INC Wallingford, CT 06492 (203) 741-0859	
Title: Inside Post Mount w/t Large Stops - SIDE SCREWS -	
Date: 08/01/06	By: MC
Scale: N/A	Rev: 08/01/06 by MC
Page: 4 of 4	Rev: 12/01/2011 by MC
Alloy:	Rev:
Temper:	Patent: 7,938,163
Length:	Others Pending
Die:	
all contents copyright 2006, 2012 by CSW, Inc.	