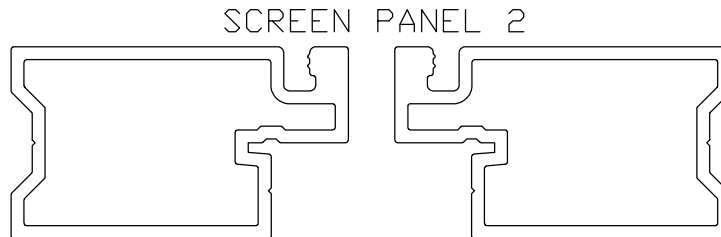


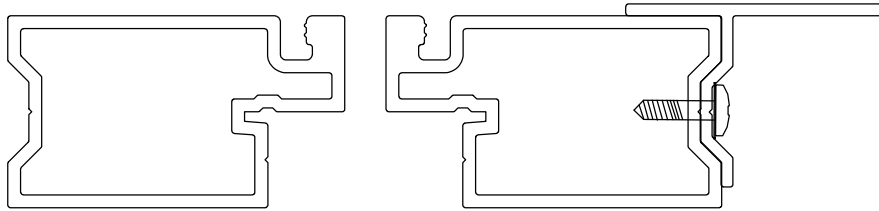
FACE FIRST CHANNEL TOWARDS THE EXTERIOR OF OPENING
 INSTALL SCREWS EVERY 24" OC. USE #27 DRILL FOR PRE-DRILLING



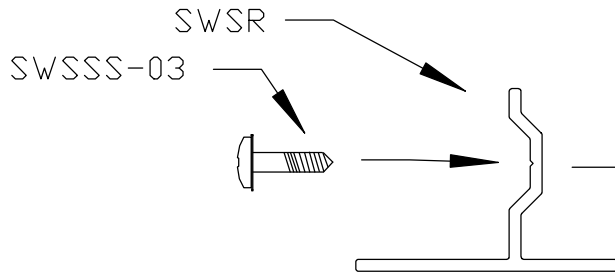
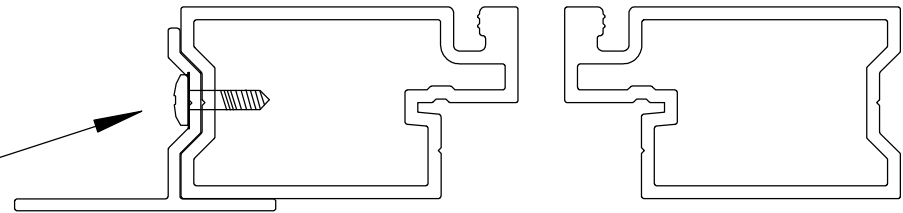
NOTICE:
 REVIEW AND UNDERSTAND ALL ASSOCIATED PAGES PRIOR TO CALCULATING ANY
 MANUFACTURE SIZES. R CHANNEL USE WILL AFFECT ALL PRODUCTION SIZES
 REQUIRED. ALSO REVIEW ALL STANDARD GUIDELINES FOR IMPORTANT
 INFORMATION, RESTRICTIONS, LIMITATIONS, AND RECOMMENDATIONS CONCERNING
 THIS EXTRUSION AND ITS USE. THIS PARTICULAR USAGE SUGGESTION MAY NEED TO
 BE MODIFIED FOR YOUR APPLICATION. IN ALL CASES, BE SURE TO CONSULT AND
 FOLLOW ALL LOCAL BUILDING CODES.

Connecticut Screen Wall System™ Works	
CONNECTICUT SCREEN WORKS, INC Wallingford, CT 06492 (203) 741-0895	
Title: 2 PANEL INSTALL (HOR R CHANNEL)	
Date: 09/15/06	By: MC
Scale: N/A	Rev: 09/21/06 by MC
Page: 1 OF 3	Rev:
Alloy: 6063	Rev:
Temper: T5	Patent:
Length:	<i>System - Pending</i>
Die:	
<small>all contents copyright 2006 by CSW, Inc.</small>	


SCREEN PANEL 1



SCREEN PANEL 2

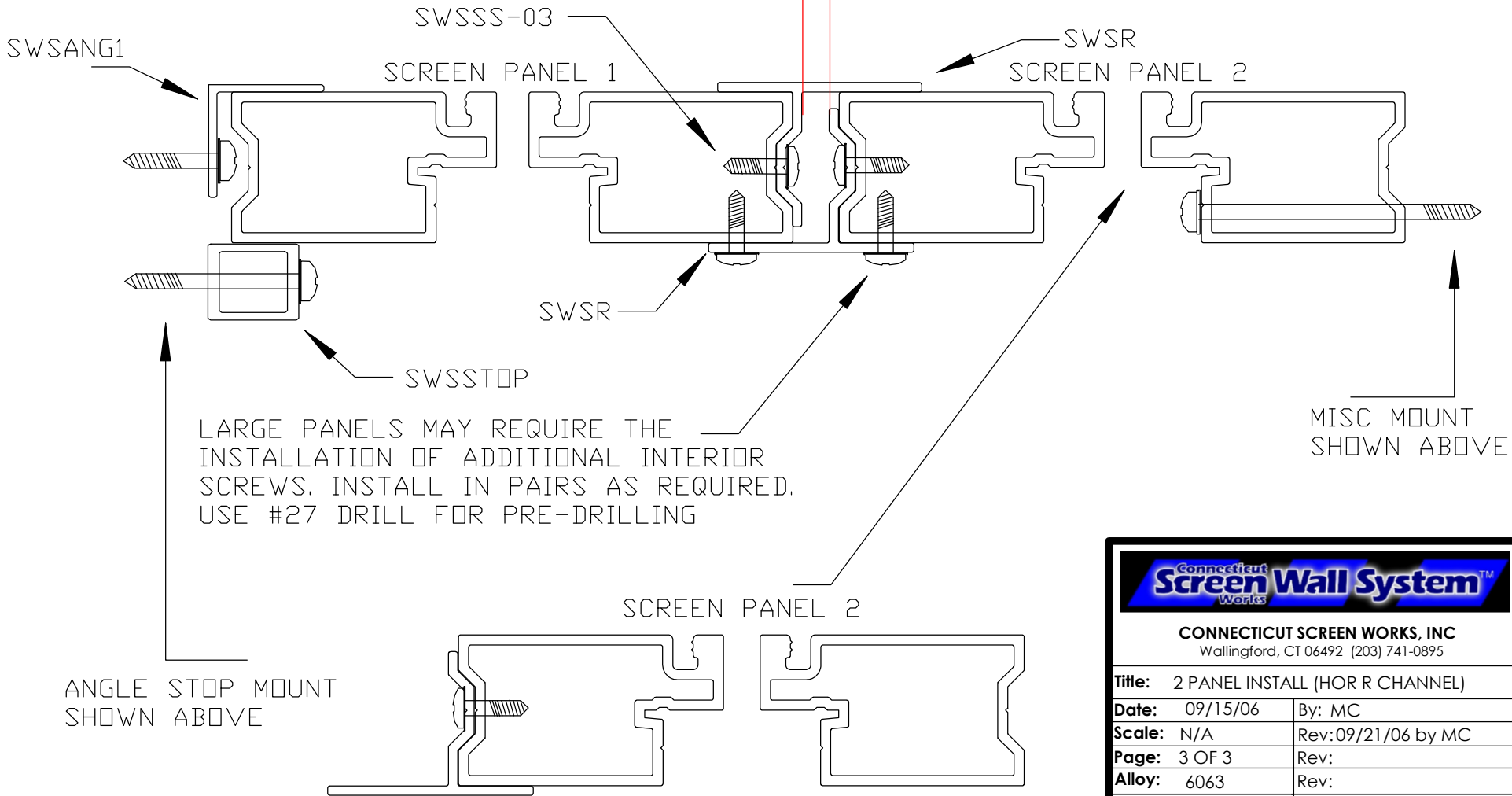


FACE SECOND CHANNEL TOWARDS THE INTERIOR OF OPENING
 INSTALL SCREWS EVERY 24" OC. USE #27 DRILL FOR PRE-DRILLING

	
CONNECTICUT SCREEN WORKS, INC Wallingford, CT 06492 (203) 741-0895	
Title: 2 PANEL INSTALL (HOR R CHANNEL)	
Date: 09/15/06	By: MC
Scale: N/A	Rev: 09/21/06 by MC
Page: 2 OF 3	Rev:
Alloy: 6063	Rev:
Temper: T5	Patent:
Length:	System - Pending
Die:	
all contents copyright 2006 by CSW, Inc.	

APPROX .250

DISTANCE DETAILED IS TYP FOR ALL. ACTUAL SIZE MAY VARY BASED UPON CALCULATIONS MADE DURING PLANNING



LARGE PANELS MAY REQUIRE THE INSTALLATION OF ADDITIONAL INTERIOR SCREWS. INSTALL IN PAIRS AS REQUIRED. USE #27 DRILL FOR PRE-DRILLING

ANGLE STOP MOUNT SHOWN ABOVE

INSTALL PANEL 2. R CHANNEL(S) WILL OVERLAP WHEN INSTALLED.

CONNECTICUT SCREEN WORKS, INC Wallingford, CT 06492 (203) 741-0895	
Title: 2 PANEL INSTALL (HOR R CHANNEL)	
Date: 09/15/06	By: MC
Scale: N/A	Rev: 09/21/06 by MC
Page: 3 OF 3	Rev:
Alloy: 6063	Rev:
Temper: T5	Patent:
Length:	System - Pending
Die:	
<small>all contents copyright 2006 by CSW, Inc.</small>	