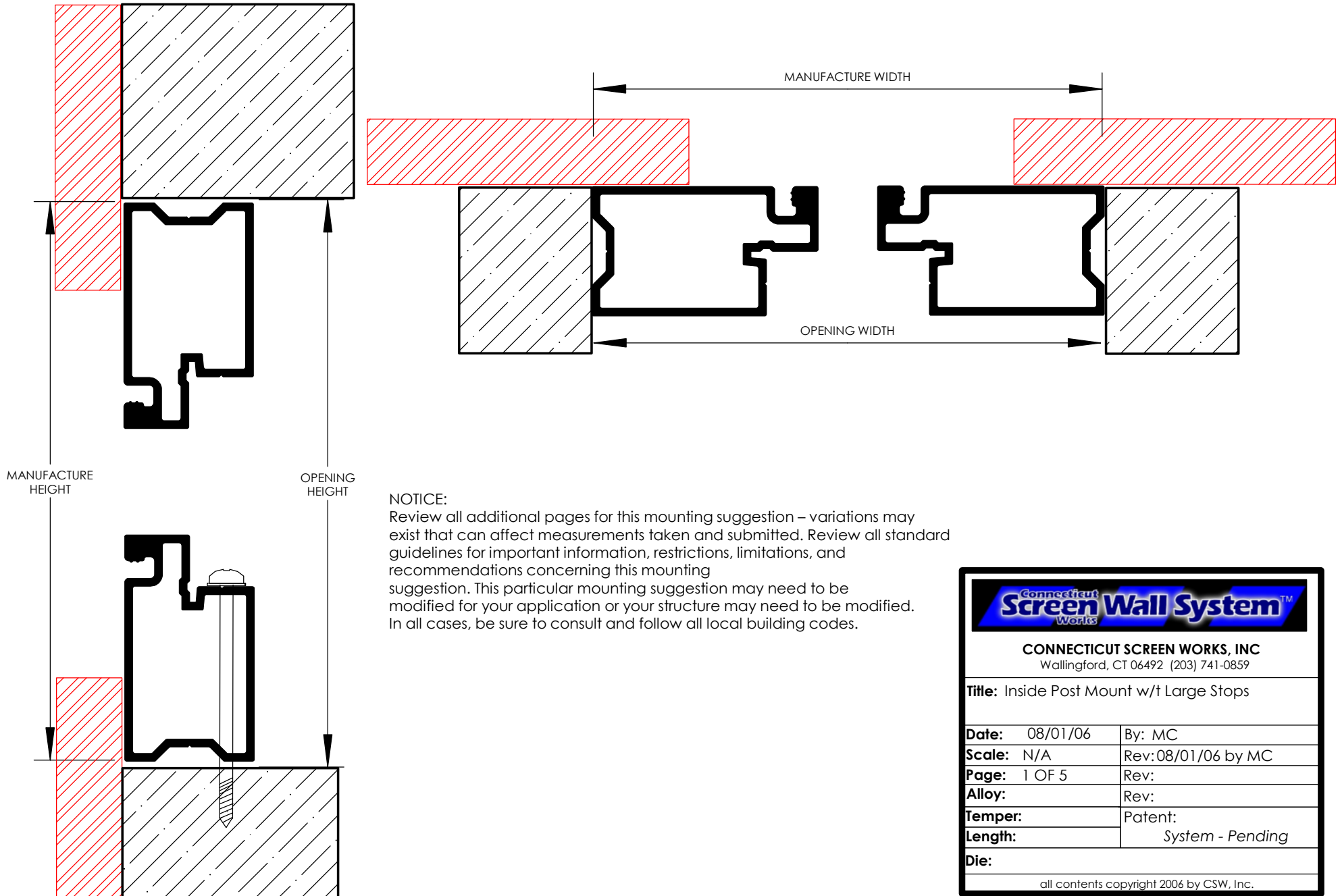



INSIDE POST WITH LARGE STOPS

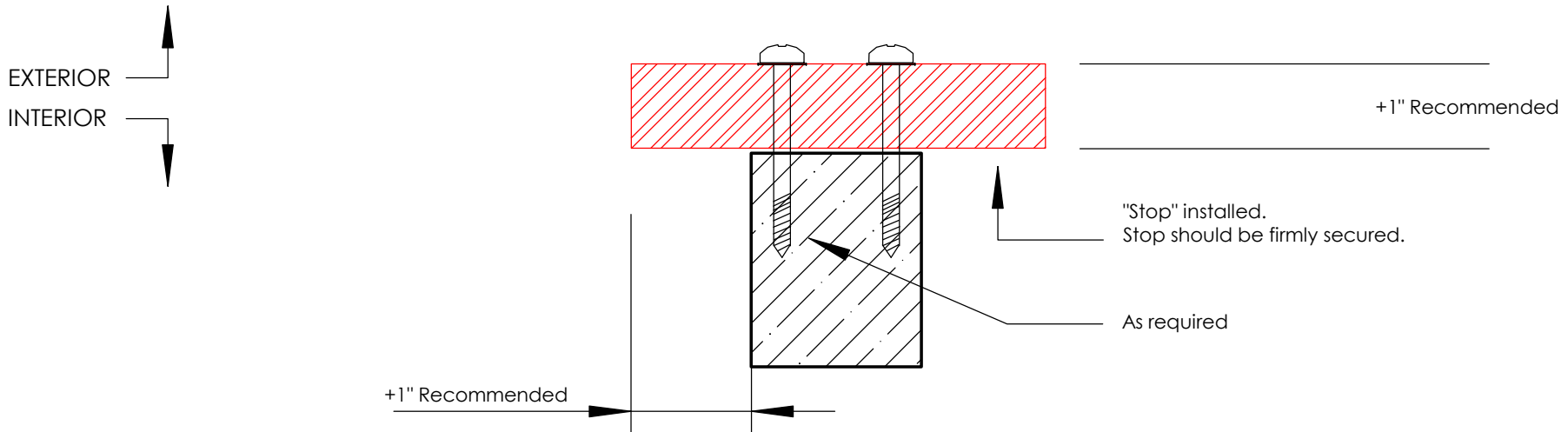


NOTICE:
 Review all additional pages for this mounting suggestion – variations may exist that can affect measurements taken and submitted. Review all standard guidelines for important information, restrictions, limitations, and recommendations concerning this mounting suggestion. This particular mounting suggestion may need to be modified for your application or your structure may need to be modified. In all cases, be sure to consult and follow all local building codes.

	
CONNECTICUT SCREEN WORKS, INC Wallingford, CT 06492 (203) 741-0859	
Title: Inside Post Mount w/t Large Stops	
Date: 08/01/06	By: MC
Scale: N/A	Rev: 08/01/06 by MC
Page: 1 OF 5	Rev:
Alloy:	Rev:
Temper:	Patent:
Length:	<i>System - Pending</i>
Die:	
<small>all contents copyright 2006 by CSW, Inc.</small>	

INSIDE POST WITH LARGE STOPS

TOP DOWN VIEW OF TWO ADJOINING MASTER FRAME PANELS



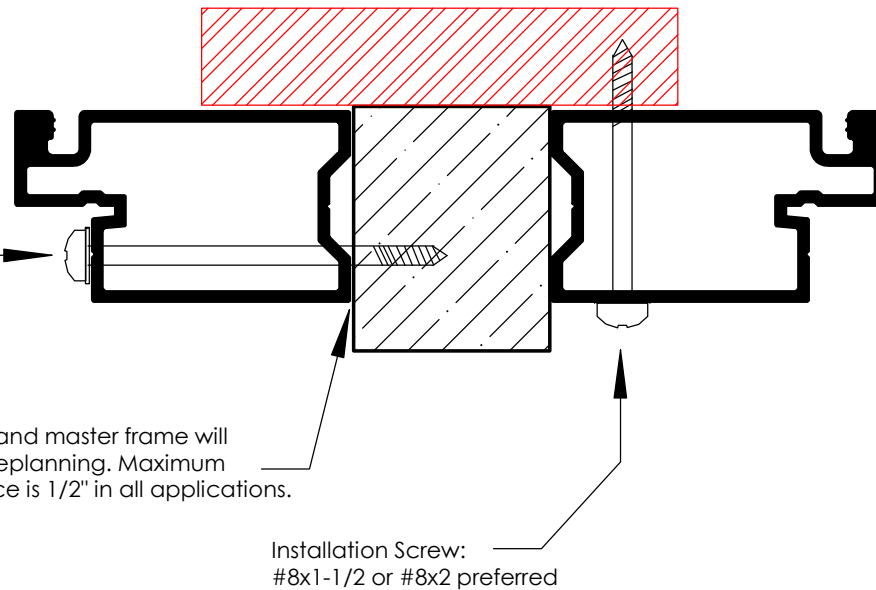
INSTALLATION - USE ONE METHOD - NOT BOTH


Do not side screw in applications where inserts are to be installed into the master frame. Screw head will block insert installation.

Mounting Screw:
#8x2-1/2 or #8x3 preferred

Gap between post and master frame will vary based upon preplanning. Maximum recommended space is 1/2" in all applications.

Installation Screw:
#8x1-1/2 or #8x2 preferred

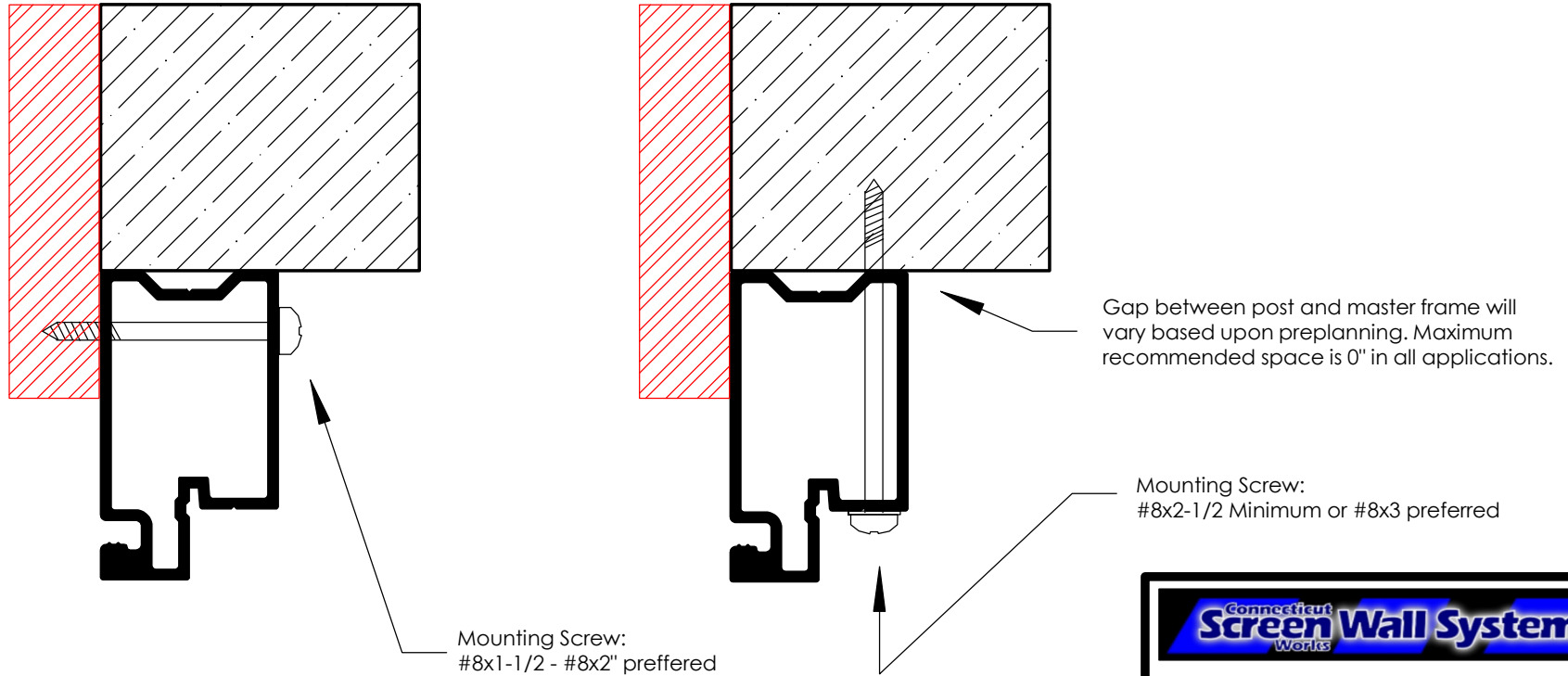


	
CONNECTICUT SCREEN WORKS, INC Wallingford, CT 06492 (203) 741-0859	
Title: Inside Post Mount w/t Large Stops	
Date: 08/01/06	By: MC
Scale: N/A	Rev: 08/01/06 by MC
Page: 2 OF 5	Rev:
Alloy:	Rev:
Temper:	Patent:
Length:	System - Pending
Die:	
all contents copyright 2006 by CSW, Inc.	

INSIDE POST WITH LARGE STOPS



SIDE VIEW OF TOP MASTER FRAME INSTALLATION INSTALLATION - USE ONE METHOD - NOT BOTH



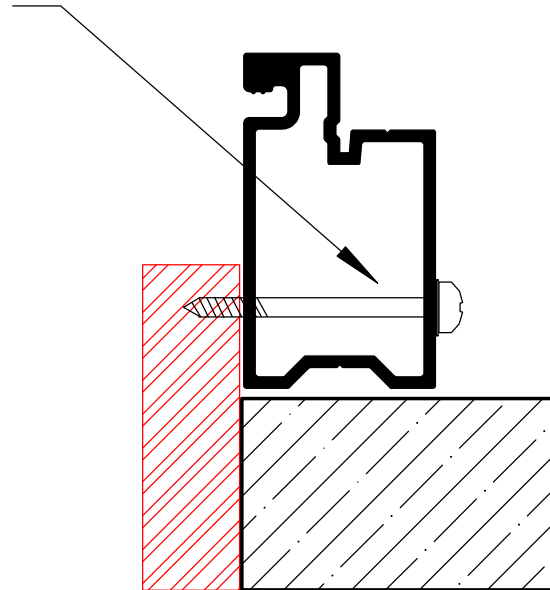
CONNECTICUT SCREEN WORKS, INC Wallingford, CT 06492 (203) 741-0859	
Title: Inside Post Mount w/t Large Stops	
Date: 08/01/06	By: MC
Scale: N/A	Rev: 08/01/06 by MC
Page: 3 OF 5	Rev:
Alloy:	Rev:
Temper:	Patent:
Length:	System - Pending
Die:	
<small>all contents copyright 2006 by CSW, Inc.</small>	

INSIDE POST WITH LARGE STOPS

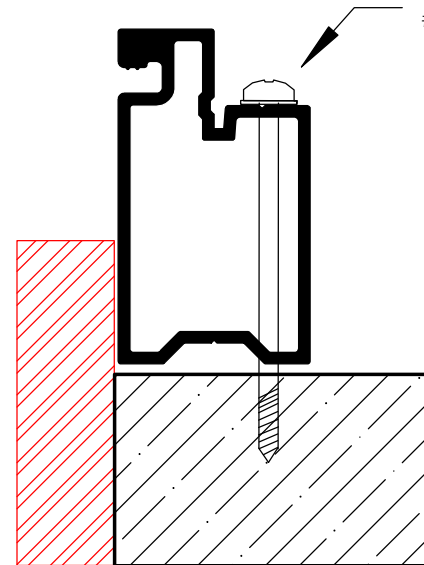
← EXTERIOR
 INTERIOR →


SIDE VIEW OF LOWER MASTER FRAME INSTALLATION

Installation by face screwing into stop:
 #8x1-1/2 - #8x2 preferred



Mounting Screw:
 #8x2-1/2 or #8x3 preferred



	
CONNECTICUT SCREEN WORKS, INC Wallingford, CT 06492 (203) 741-0859	
Title: Inside Post Mount w/t Large Stops	
Date: 08/01/06	By: MC
Scale: N/A	Rev: 08/01/06 by MC
Page: 4 OF 5	Rev:
Alloy:	Rev:
Temper:	Patent:
Length:	<i>System - Pending</i>
Die:	
<small>all contents copyright 2006 by CSW, Inc.</small>	