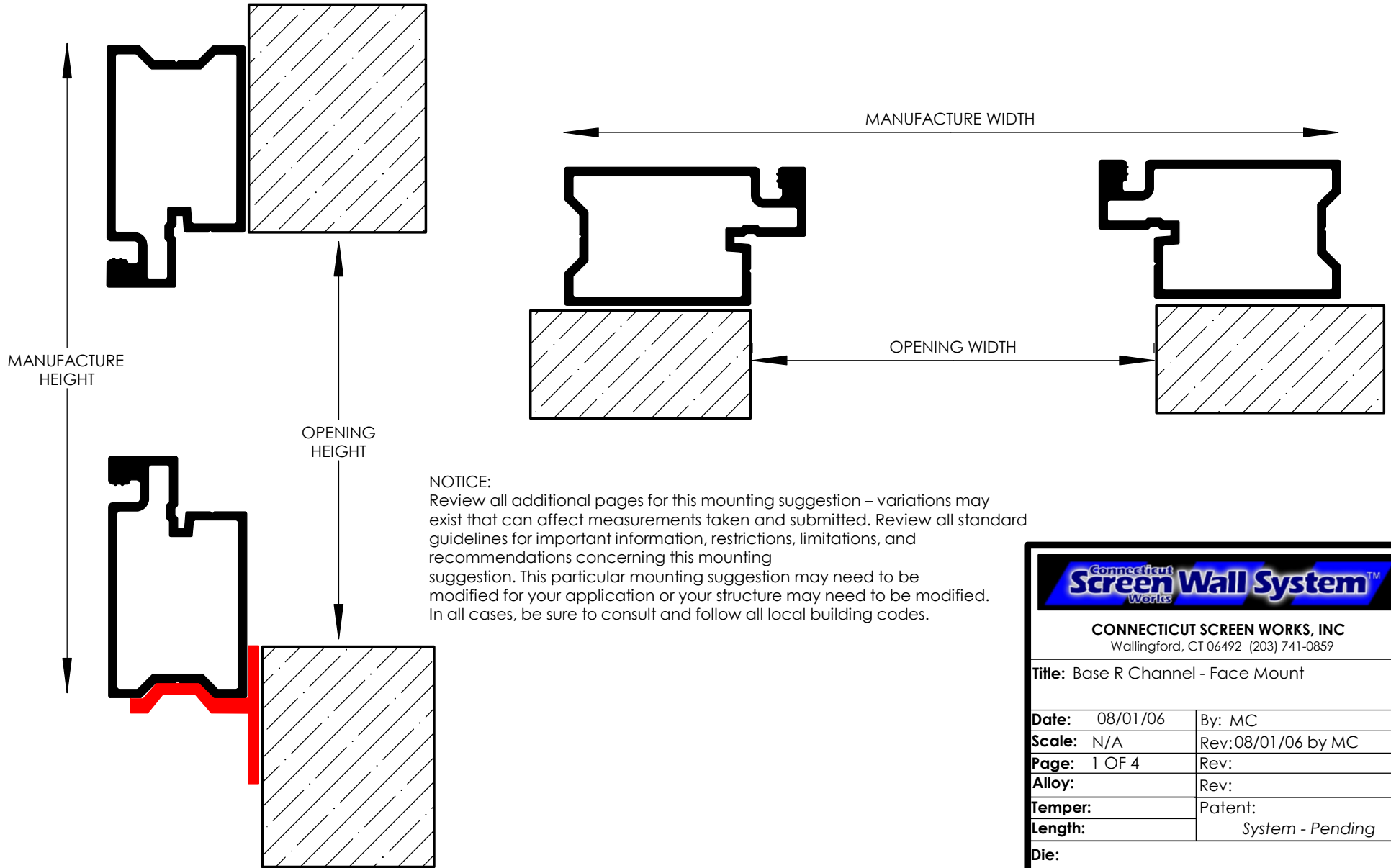



BASE R CHANNEL - FACE MOUNT

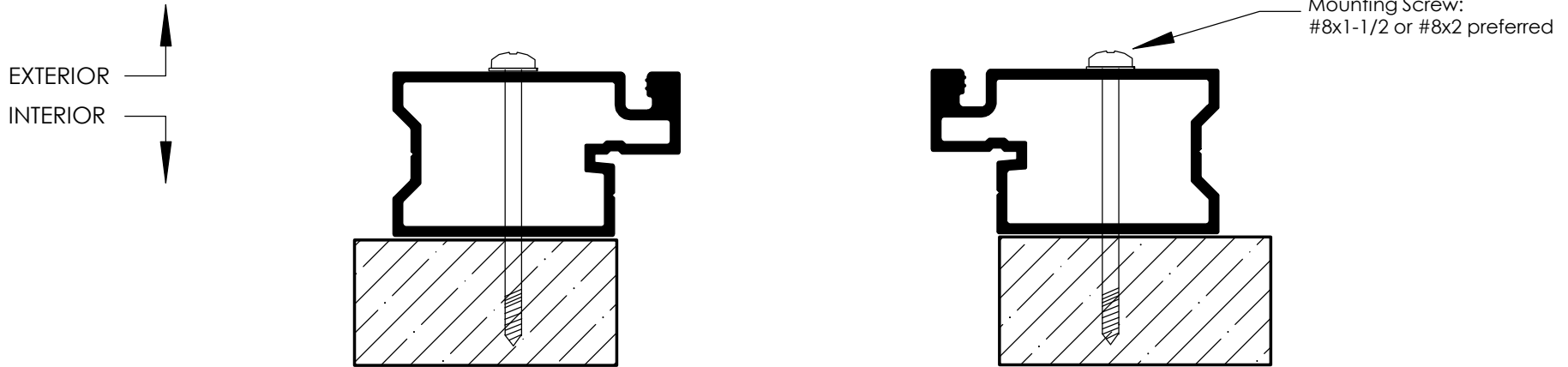


NOTICE:
 Review all additional pages for this mounting suggestion – variations may exist that can affect measurements taken and submitted. Review all standard guidelines for important information, restrictions, limitations, and recommendations concerning this mounting suggestion. This particular mounting suggestion may need to be modified for your application or your structure may need to be modified. In all cases, be sure to consult and follow all local building codes.

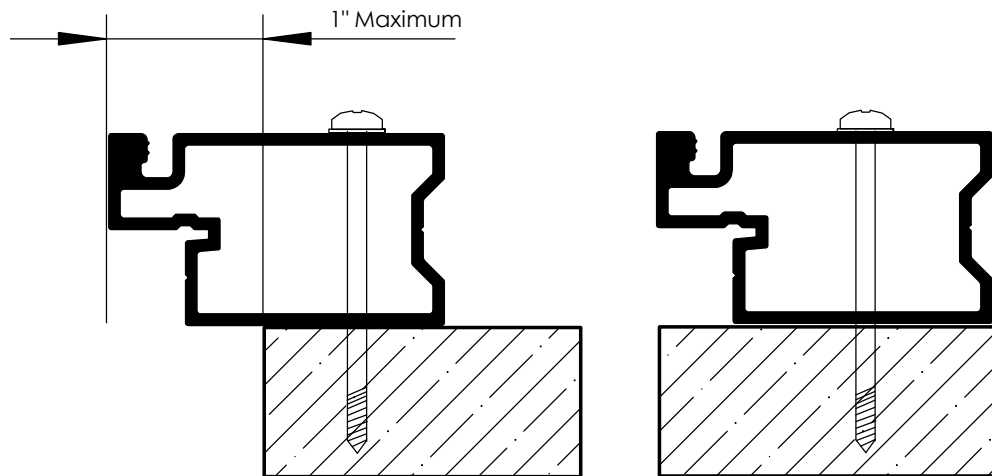
| | |
|---|----------------------------|
|  | |
| CONNECTICUT SCREEN WORKS, INC Wallingford, CT 06492 (203) 741-0859 | |
| Title: Base R Channel - Face Mount | |
| Date: 08/01/06 | By: MC |
| Scale: N/A | Rev: 08/01/06 by MC |
| Page: 1 OF 4 | Rev: |
| Alloy: | Rev: |
| Temper: | Patent: |
| Length: | <i>System - Pending</i> |
| Die: | |
| <small>all contents copyright 2006 by CSW, Inc.</small> | |

BASE R CHANNEL - FACE MOUNT


TOP DOWN VIEW OF MASTER FRAME INSTALLED



VARIATIONS



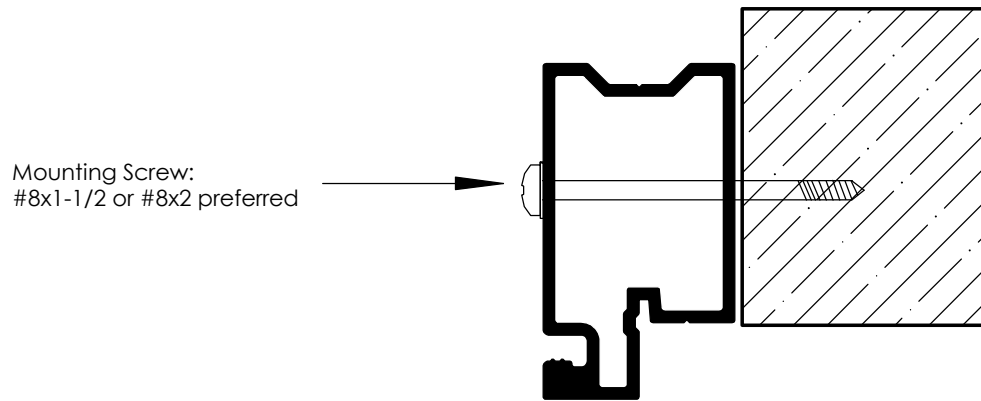
Master frame can be positioned for mounting as required.

| | |
|---|----------------------------|
|  | |
| CONNECTICUT SCREEN WORKS, INC Wallingford, CT 06492 (203) 741-0859 | |
| Title: Base R Channel - Face Mount | |
| Date: 08/01/06 | By: MC |
| Scale: N/A | Rev: 08/01/06 by MC |
| Page: 2 OF 4 | Rev: |
| Alloy: | Rev: |
| Temper: | Patent: |
| Length: | System - Pending |
| Die: | |
| all contents copyright 2006 by CSW, Inc. | |

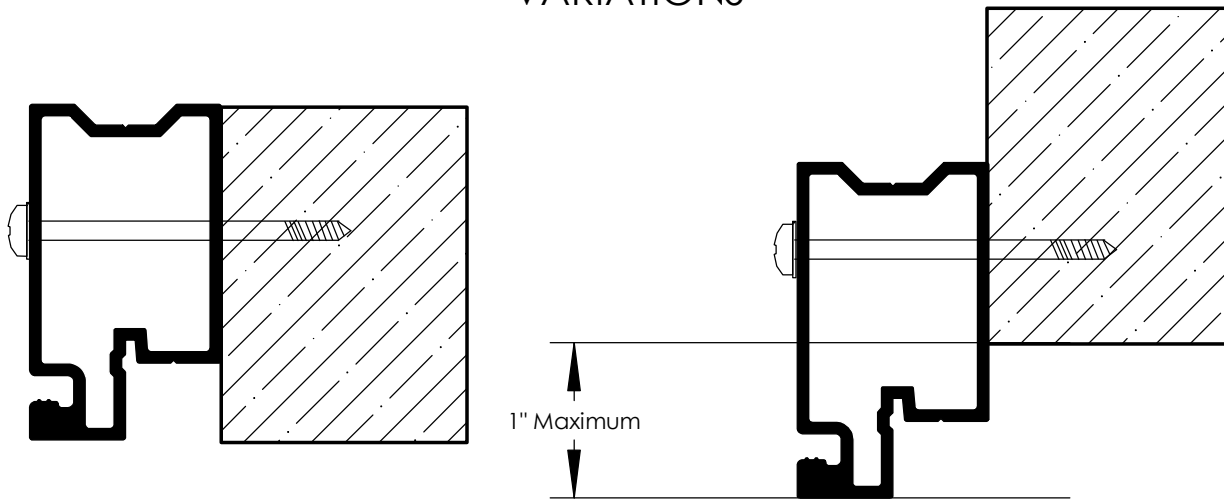
BASE R CHANNEL - FACE MOUNT



SIDE VIEW OF TOP MASTER FRAME INSTALLATION



VARIATIONS



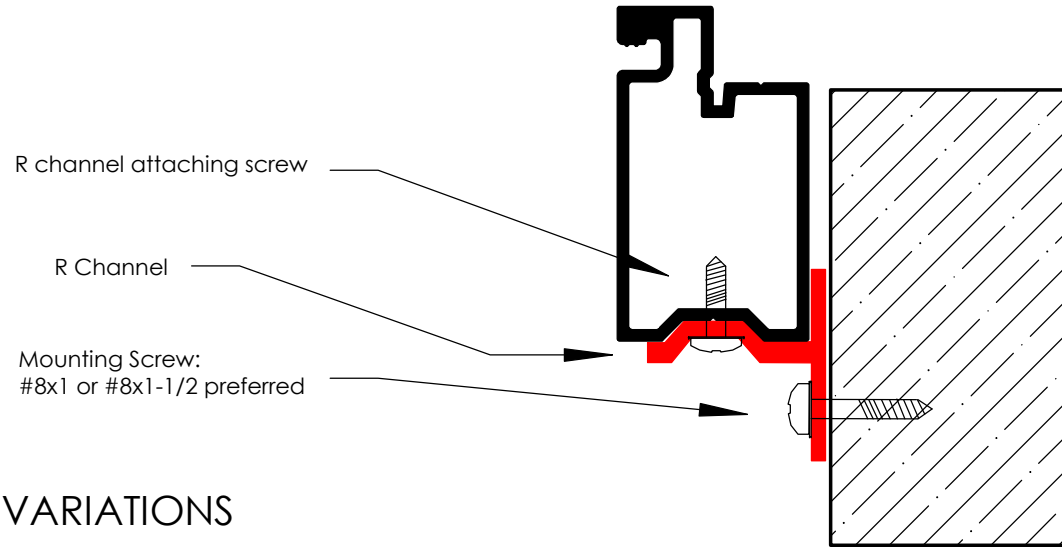
Master frame can be positioned for mounting as required.

| | |
|---|---------------------|
| Connecticut Screen Works | |
| CONNECTICUT SCREEN WORKS, INC | |
| Wallingford, CT 06492 (203) 741-0859 | |
| Title: Base R Channel - Face Mount | |
| Date: 08/01/06 | By: MC |
| Scale: N/A | Rev: 08/01/06 by MC |
| Page: 3 OF 4 | Rev: |
| Alloy: | Rev: |
| Temper: | Patent: |
| Length: | System - Pending |
| Die: | |
| <small>all contents copyright 2006 by CSW, Inc.</small> | |

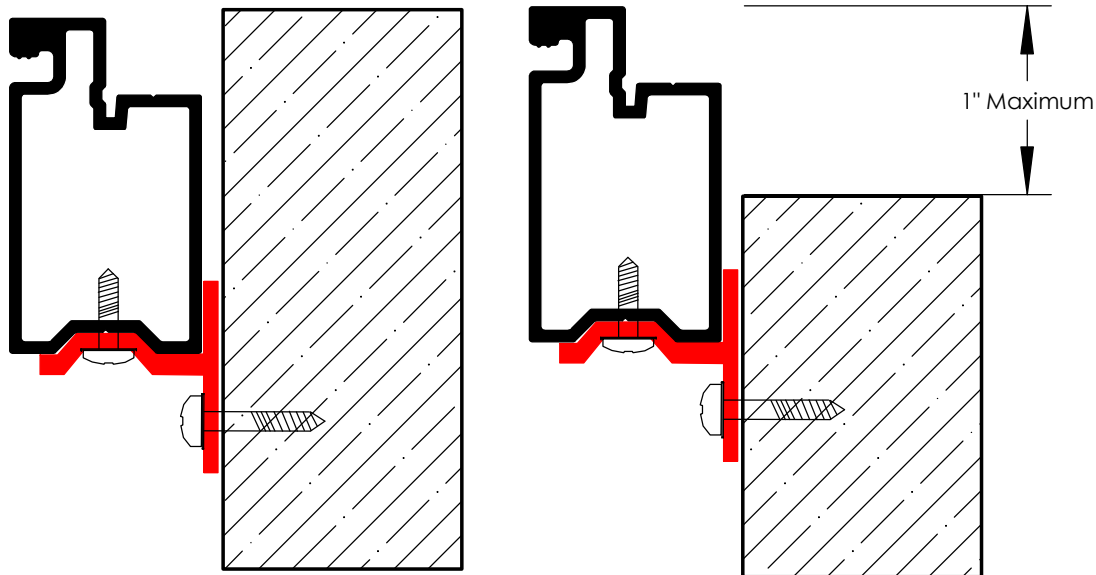
BASE R CHANNEL - FACE MOUNT




SIDE VIEW OF LOWER MASTER FRAME INSTALLATION



VARIATIONS



Master frame can be positioned for mounting as required.

| | |
|---|----------------------------|
|  | |
| CONNECTICUT SCREEN WORKS, INC Wallingford, CT 06492 (203) 741-0859 | |
| Title: Base R Channel - Face Mount | |
| Date: 08/01/06 | By: MC |
| Scale: N/A | Rev: 08/01/06 by MC |
| Page: 4 OF 4 | Rev: |
| Alloy: | Rev: |
| Temper: | Patent: |
| Length: | System - Pending |
| Die: | |
| all contents copyright 2006 by CSW, Inc. | |